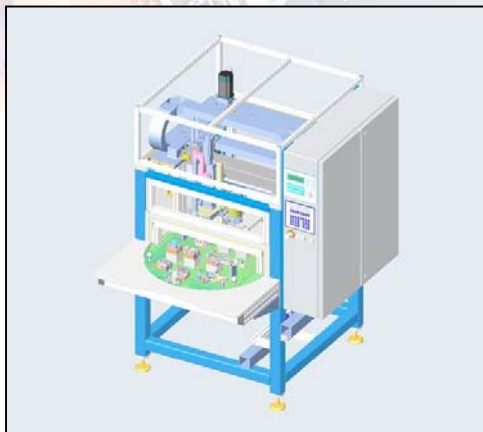


WSZ Automatic Work Cells

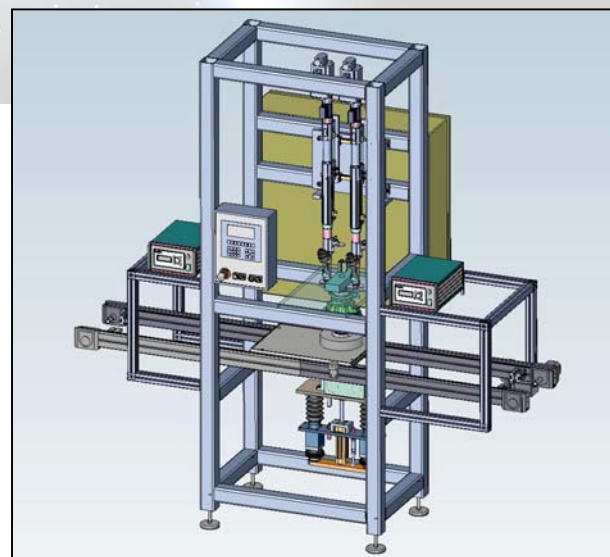
Extending the success that Weber's range of modular automated screw driving spindles has brought to their UK customers, Weber introduce a range of 'stand alone' modular assembly cells.

Our machines incorporate the following features:

- **Modularity** minimizes the 'one off' design element of the cost of the cell.
- Products with different fastener hole patterns can be assembled by automatic **xy coordinate program** selection.
- **Easy change fixtures** can accommodate different work pieces.
- Fastener changes accommodated simply by **standard change parts** (ie head, tube, escapement)
- Pneumatic or dc drive/controller to meet **screw driving process** requirements.
- **Z axis screw height changes** can be accommodated by analogue depth transducer or programmable z axis.
- The Cells can be single station, dual station or multi station, with static fixtures, sliding fixtures or rotary tables in order to **minimize cycle time**.
- **Stand alone** or for integration into an **assembly line**.
- **Other functions** can be added to the z axis to **maximise machine utilization** ie drilling.
- Weber provide the **complete solution** – Weber takes **complete responsibility**.
- Supplied on castors for easy factory positioning and ready for electrical and airline connection.
- CE marked.
- Full twelve month **on site warranty & full expert machine back up and service**.

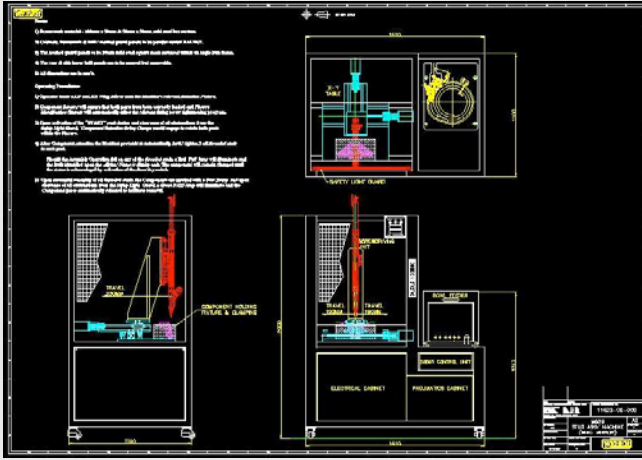


WSZ xy for conveyor line integration



WSZ xy cell with rotary table indexer

WSZ Standard Designs



WSZ xy cell, single station



WSZ xy cell, double station

Machine Features:

Fastener types:	screws, screws & washers, nuts, pins, clips
Fixtures:	easy change and optional automatic recognition
XY positioning:	programmable
XY range:	up to 500 x 500mm is standard, larger on request
Z axis:	analogue depth transducer or programmable
Screw driving process control:	torque & depth (pneumatic), or torque & angle & depth (electric)
Insertion process control:	force and depth
Guarding:	mechanical guarding at rear, light guards at front
Machine start	by push button, or exit of light guard

Machine Data:

Voltage / frequency	240 VAC / 50 Hz
Loading	<20 amps
Flow pressure:	6 – 8 bar
Spindle drives:	pneumatic or electric
Screw driver spindle range:	Weber SA series
Torque range:	0.5 to 30 Nm
Insertion spindle range:	Weber PEB series
Pneumatic control:	Festo
PLC:	Siemens S7



For more information on Weber solutions please visit our web site

www.weberautomation.com

Or call us on 01865 331334